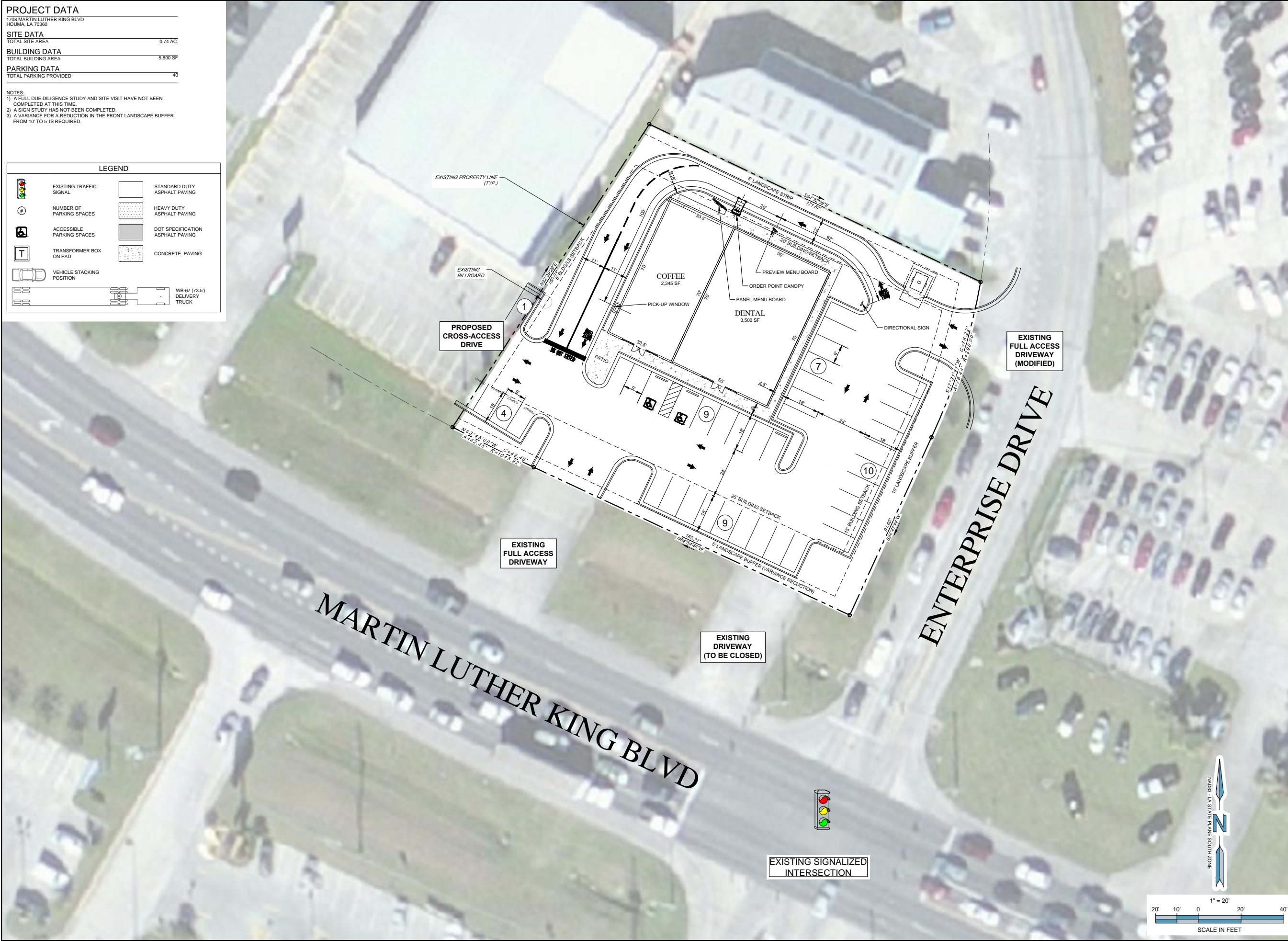


PROJECT DATA	
1708 MARTIN LUTHER KING BLVD HOUMA, LA 70360	
SITE DATA	
TOTAL SITE AREA	0.74 AC.
BUILDING DATA	
TOTAL BUILDING AREA	5,800 SF
PARKING DATA	
TOTAL PARKING PROVIDED	40

- NOTES:**
- 1) A FULL DUE DILIGENCE STUDY AND SITE VISIT HAVE NOT BEEN COMPLETED AT THIS TIME.
 - 2) A SIGN STUDY HAS NOT BEEN COMPLETED.
 - 3) A VARIANCE FOR A REDUCTION IN THE FRONT LANDSCAPE BUFFER FROM 10' TO 5' IS REQUIRED.

LEGEND	
	EXISTING TRAFFIC SIGNAL
	NUMBER OF PARKING SPACES
	ACCESSIBLE PARKING SPACES
	TRANSFORMER BOX ON PAD
	VEHICLE STACKING POSITION
	STANDARD DUTY ASPHALT PAVING
	HEAVY DUTY ASPHALT PAVING
	DOT SPECIFICATION ASPHALT PAVING
	CONCRETE PAVING
	WB-67 (73.5') DELIVERY TRUCK



ENGINEER:
FORESITE
 group
 Foresite Group, Inc. | www.fg-inc.net
 3740 Davinci Ct. | 770.368.1399
 Suite 100 | 770.368.1944
 Peachtree Corners, GA 30092

DEVELOPER:
 SOUTHBOUND DEVELOPMENT
 300 GALLERIA PKWY
 ATLANTA, GA 30339
 (404) 987-2402
 CONTACT: MIKE BIRNBREY

PROJECT:
 1708 MARTIN LUTHER KING BLVD
 HOUMA, LA 70360

SEAL:
DRAFT

REVISIONS	DATE
UPDATE DRIVE-THRU QUE LF	11/22/2017
PROJECT MANAGER:	BLH
DRAWING BY:	LA EVANS
JURISDICTION:	HOUMA, LA
DATE:	NOVEMBER 21, 2017
SCALE:	1" = 20'
TITLE:	

QL-2
 SHEET NUMBER:
 1 OF 1
 COMMENTS: NOT RELEASED FOR CONSTRUCTION
 JOB/FILE NUMBER: 934.008

